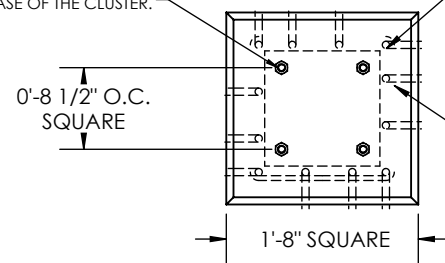


REVISIONS			
REV.	DESCRIPTION	DATE	APP'D
-	PRINT RELEASE	11/17/2022	L.S.

ANCHOR BOLT CLUSTER:
USE (4) 3/4"Ø ANCHOR BOLT
ASTM-F1554-S2, S5 GR. 105; H.D.G. X 1'-10"
LONG W/ A 1/2" THICK BEARING PLATE
INSTALLED AT BASE OF THE CLUSTER.

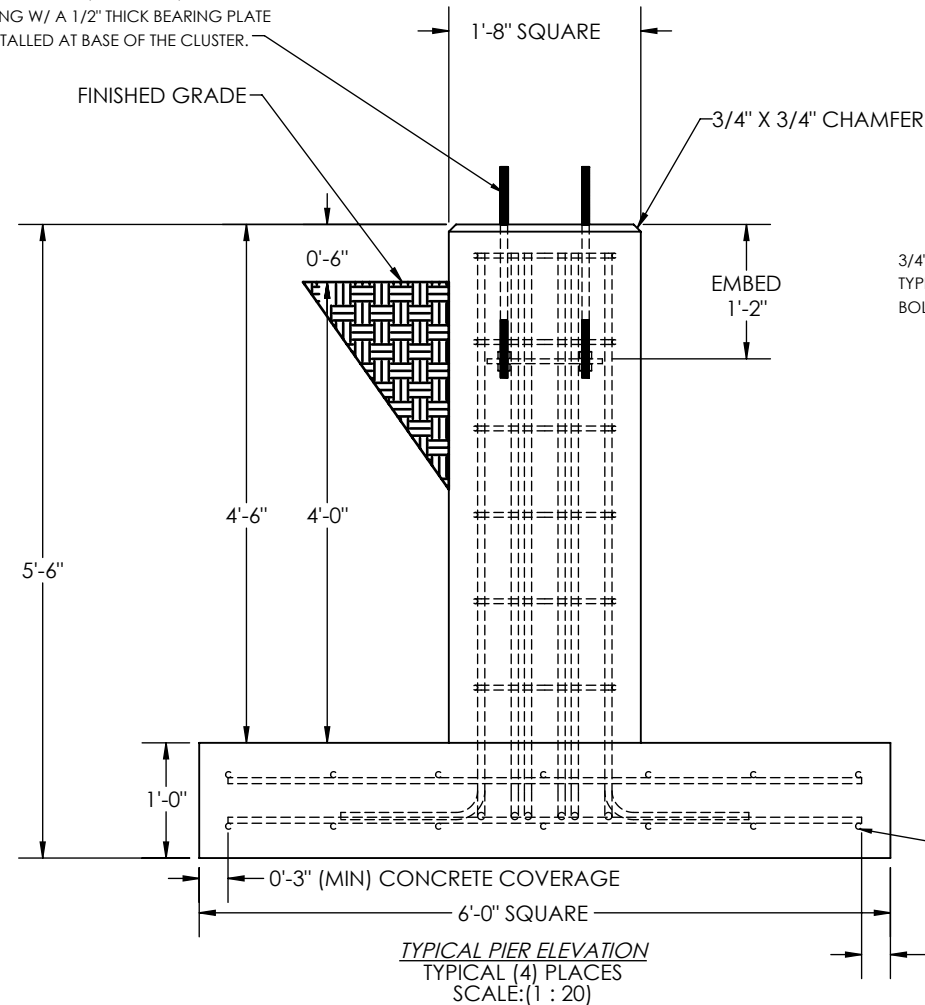


TYPICAL PIER CROSS-SECTION
SCALE: (1:20)

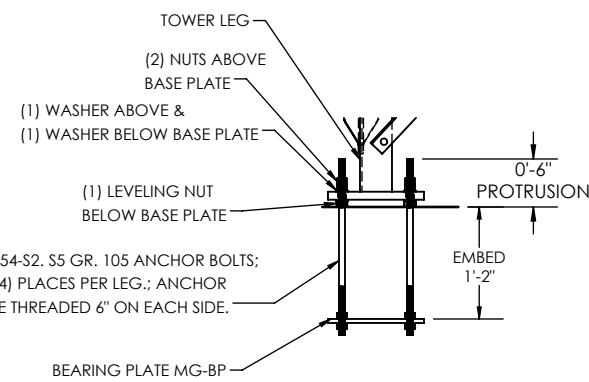
(12) #6 VERT HOOKED DOWELS
(5' VERT W/ STD 90° HOOK, 12" LONG);
EQUALLY SPACED WITHIN TIES

(6) #4 TIES X 1'-2 1/2" O/O;
LOCATE 9" O.C. VERTICALLY

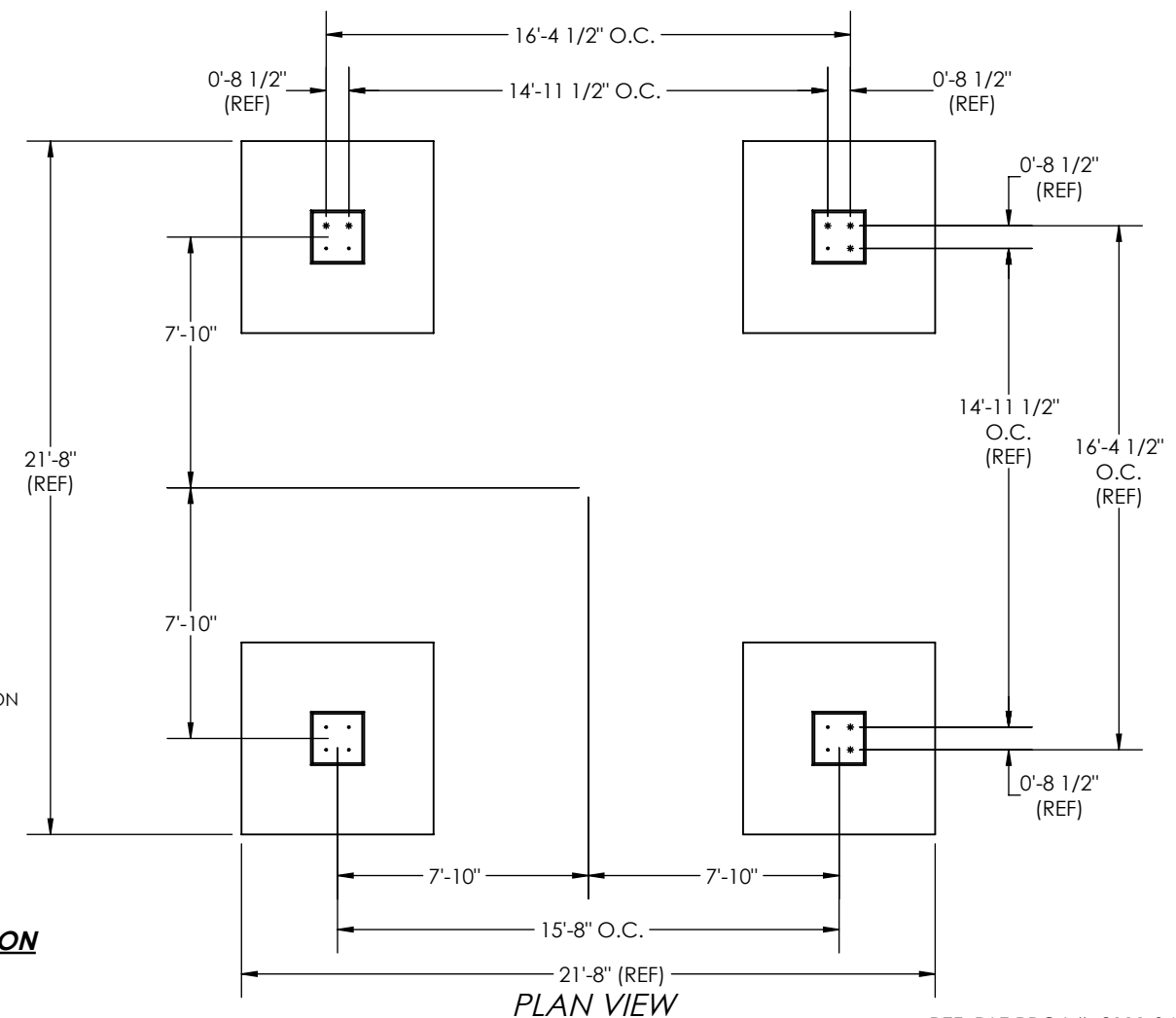
ANCHOR BOLT CLUSTER:
USE (4) 3/4"Ø ANCHOR BOLT
ASTM-F1554-S2, S5 GR. 105; H.D.G. X 1'-10"
LONG W/ A 1/2" THICK BEARING PLATE
INSTALLED AT BASE OF THE CLUSTER.



TYPICAL PIER ELEVATION
TYPICAL (4) PLACES
SCALE: (1:20)



FINAL ANCHOR BOLT INSTALLATION



PLAN VIEW

REF. DLZ PROJ.#: 2111-0453-90

NOTE:

- FOUNDATION DESIGN IS BASED UPON 3,000psf SOIL BEARING PRESSURE.
- ALL REINFORCING BAR (REBAR) SHALL BE DEFORMED AND CONFORM TO THE REQUIREMENTS OF ASTM-615, USING GRADE 60 REBAR AND SHALL HAVE A MINIMUM OF 0'-3" CONCRETE COVERAGE.
- ALL CONCRETE WORK INCLUDING FORMING, REINFORCING, MIXING, PLACING, AND CURING SHALL BE IN ACCORDANCE WITH ACI-318 BUILDING CODE REQUIREMENTS FOR STRUCTURAL CONCRETE AND ACI-301 SPECIFICATIONS FOR STRUCTURAL CONCRETE.
- FOLLOW RECOMMENDATIONS OF ACI-305A WHEN CONCRETING DURING HOT WEATHER AND ACI-306R WHEN CONCRETING DURING COLD WEATHER.
- CONCRETE MATERIALS SHALL BE AS FOLLOWS:
*CEMENT: PER ASTM C 150, NORMAL PORTLAND TYPE 1.
*FINE AND COURSE AGGREGATES: PER ASTM C33.
*FLY ASH: CLASS C OR F PER ASTM C618.
*WATER: SHALL BE CLEAN AND NON-DETRIMENTAL TO CONCRETE.
*ADMIXTURES: OTHER THAN AIR ENTRAINMENT AND WATER REDUCTION, NO OTHER ADMIXTURES ARE ALLOWED WITHOUT PRIOR APPROVAL FROM THE E.O.R.
*AIR ENTRAINMENT ADMIXTURE: PER ASTM C-260.
- CONCRETE MIX DESIGN: CONCRETE FOR FOOTINGS:
*COMPRESSIVE STRENGTH: WHEN TESTED IN ACCORDANCE WITH ASTM C-39/C-39M SHALL BE 4,000psi AT 28 DAYS.
*CONCRETE WEIGHT: NORMAL (144lbs. PER cu. ft.)
*FLY ASH CONTENT: MAX 15% OF CEMENTITIOUS MATERIALS BY WEIGHT.
*CEMENT CONTENT: MIN 520lbs. PER CU. YD.
*WATER-TO-CEMENT RATION: 0.50
*TOTAL AIR CONTENT: 3% NATURALLY OCCURING, PER ASTM C-173.
*MAXIMUM SLUMP: 3 INCH ± 1 INCH.
*MAXIMUM COURSE AGGREGATE SIZE: 1 INCH
*WATER REDUCER: TYPE A PER ASTM C-494.
- TOWER ANCHOR BOLT PLACEMENT SHALL BE ACCOMPLISHED USING MANUFACTURER SUPPLIED ANCHOR BOLT TEMPLATE. "WET SETTING" OF ANY REINFORCING OR ANCHORAGE IS PROHIBITED.
- CONSTRUCTION SHEAR KEYS/CONSTRUCTION JOINTS ARE TO BE PROVIDED ANYWHERE THAT THERE IS DISCONTINUITY BETWEEN POURS PER ACI-318.
- FOUNDATION CONCRETE VOLUME = 1.8 cu yd., EACH; 7.2 cu yds., NET REQ'D.
- FOUNDATION REBAR WEIGHT = 331lbs., EACH; 1,324lbs., NET REQ'D.

BOM Table (Restructured)

qty	MARK	DESCRIPTION	material	LENGTH	WEIGHT	WT-GALV.
16		3/4"Ø ANCHOR BOLT	ASTM-F1554-S2, S5 GR. 105; H.D.G.	1'-10"	2.5266	2.62
4	MG-BP	BEARING PLATE	1/2" X 12" PL	12"	20.1251	20.83
80	d	3/4"Ø HEAVY HEX NUT	A325; H.D.G.		.20	0.21
32	dFW	3/4"Ø FLAT WASHER	A325; H.D.G.		.05	0.05
ESTIMATED NET SHIPPING WEIGHT =						143.64

REV. 1

TITLE: FOUNDATION DETAILS

DRAWN: K. HOOS

CHECKED:

DWG. NO.: 4011-22-A02

SCALE: 1:68

SHEET: 1 OF 2

REV. DATE:

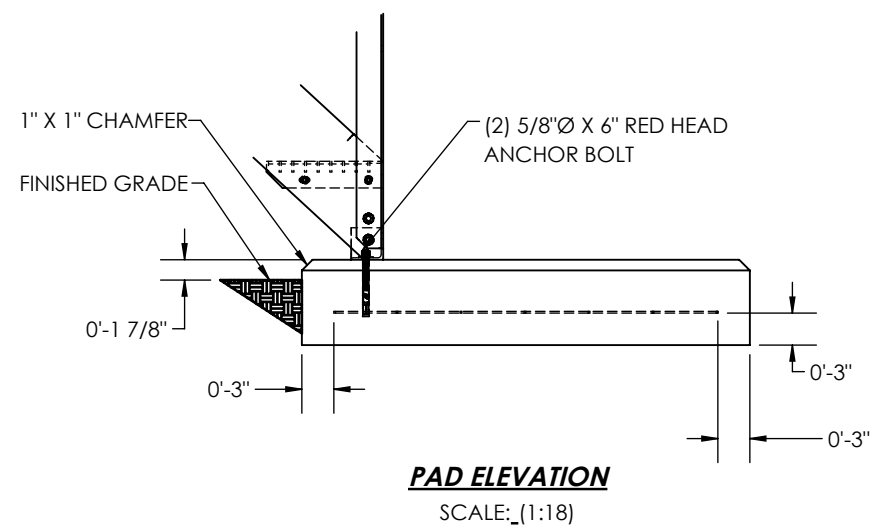
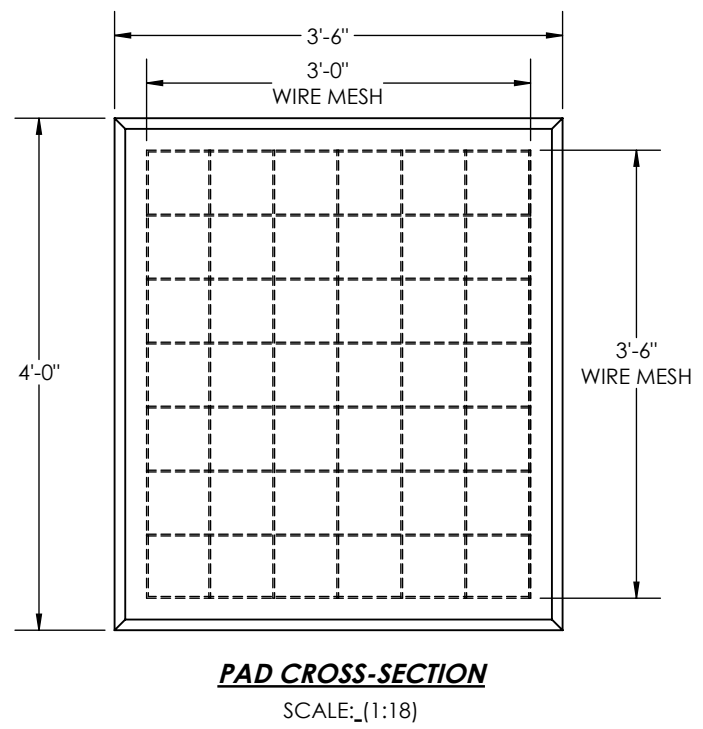
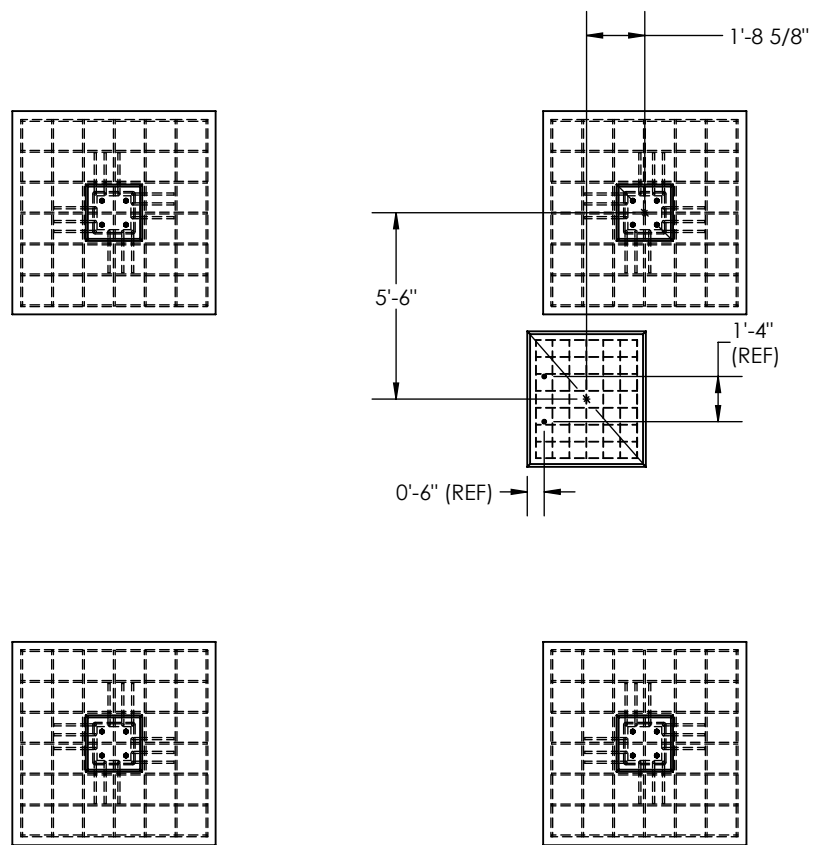
CUSTOMER: SWAGER COMMUNICATIONS INC

PROPRIETARY AND CONFIDENTIAL

THE INFORMATION CONTAINED IN THIS DRAWING IS THE SOLE PROPERTY OF SWAGER COMMUNICATIONS, INC. ANY REPRODUCTION IN PART OR AS A WHOLE WITHOUT THE WRITTEN PERMISSION OF SWAGER COMMUNICATIONS, INC. IS PROHIBITED.

REVISIONS			
REV.	DESCRIPTION	DATE	APP'D
-	PRINT RELEASE	11/17/2022	L.S.

REV	-
TITLE: FOUNDATION DETAILS	
DRAWN: K.HOOS	DWG. NO.: 4011-22-A02
CHECKED:	SHEET: 2 OF 2
	REV. DATE:



FABRICATION B.O.M. TABLE						
QTY	MARK	DESCRIPTION	MATERIAL	LENGTH	WEIGHT	WT-GALV.
2		5/8"Ø X 6" RED HEAD ANCHOR BOLT	H.D.G.; SUPPLIER STOCK	6"	0.478	0.49

PROPRIETARY AND CONFIDENTIAL
THE INFORMATION CONTAINED IN THIS DRAWING IS THE SOLE PROPERTY OF SWAGER COMMUNICATIONS, INC. ANY REPRODUCTION IN PART OR AS A WHOLE WITHOUT THE WRITTEN PERMISSION OF SWAGER COMMUNICATIONS, INC. IS PROHIBITED.

