

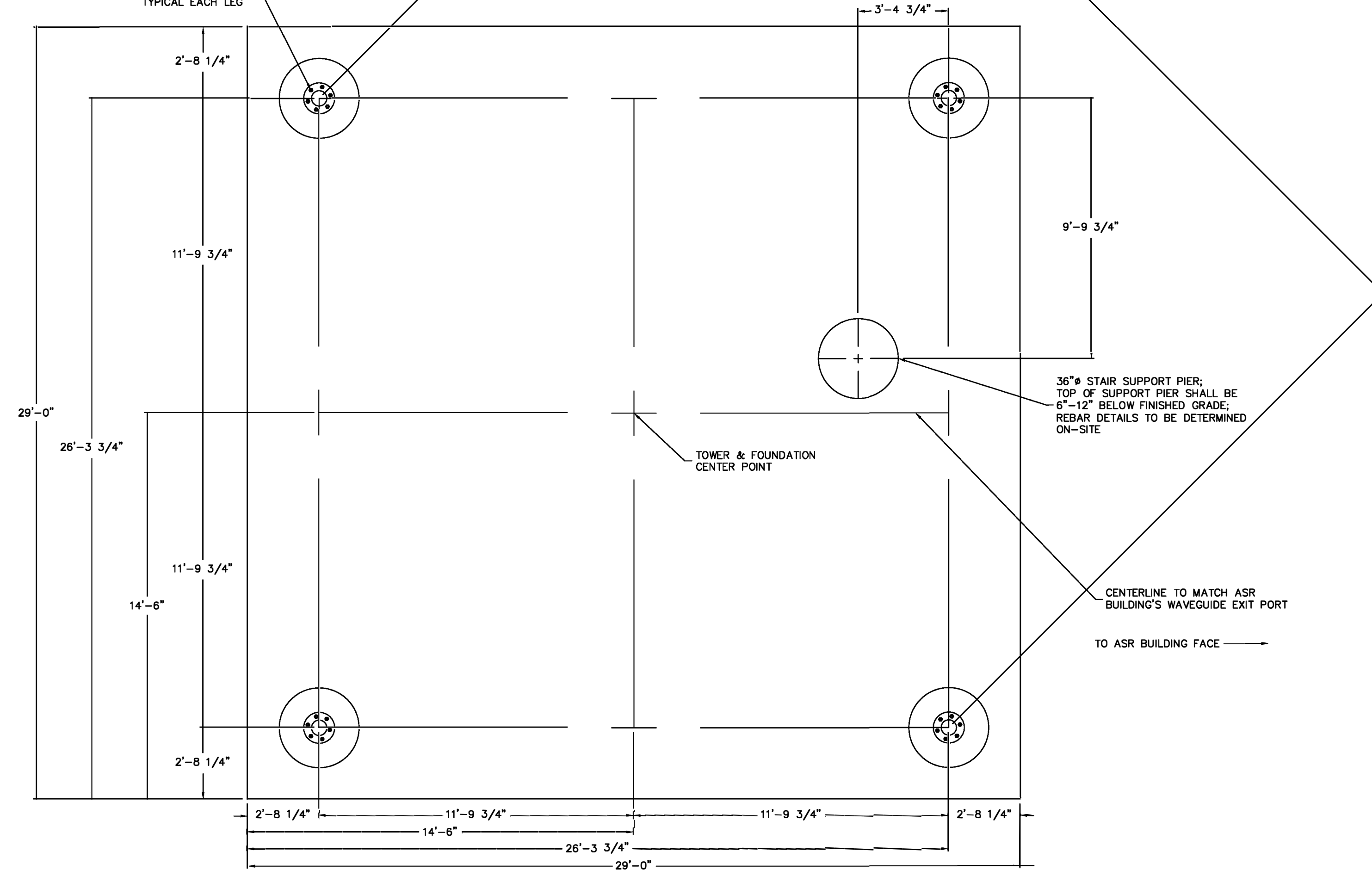
LET	REVISION	DATE	APP'D
-	INITIAL RELEASE	02/21/18	D.S.

NOTES:

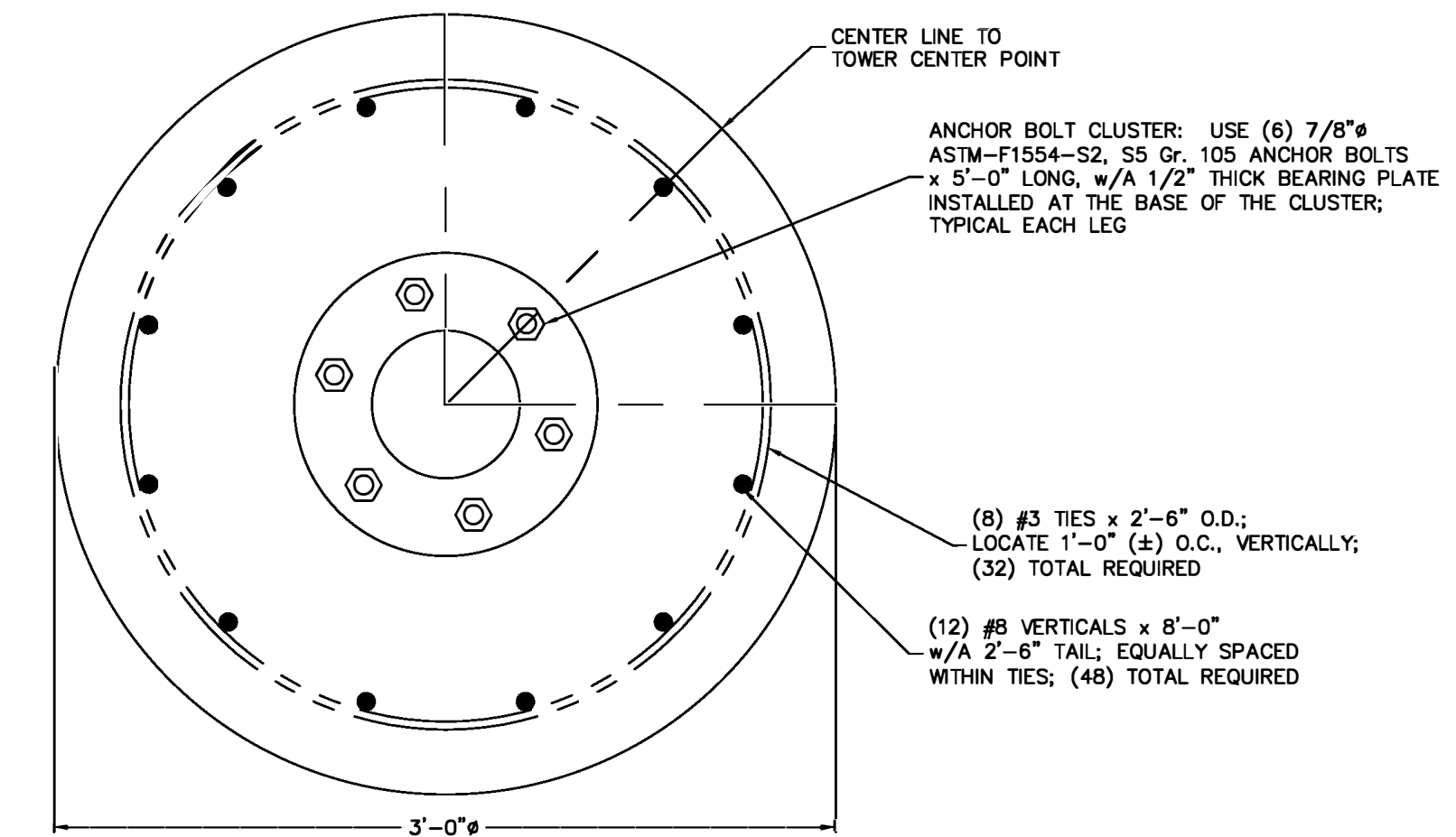
- FOUNDATION DESIGN IS BASED UPON A SOILS REPORT (#F18-17449) BY UPEA, DATED 07/21/17, WITH CONSIDERATION TO A 70" (min) FROST DEPTH.
- ALL CONCRETE SHALL HAVE A MINIMUM COMPRESSIVE STRENGTH OF 3,000psi AT 28 DAYS.
- ALL REINFORCING BAR (REBAR) SHALL BE DEFORMED AND CONFORM TO THE REQUIREMENTS OF ASTM-A615, USING GRADE 60 REBAR.
- ALL REBAR SHALL HAVE A 3", MINIMUM, CONCRETE COVER.
- FOUNDATION CONCRETE VOLUME = 51.05 cu. yds.; NOTE, CONCRETE VOLUME DOES NOT INCLUDE STAIR PIER.
- FOUNDATION REBAR WEIGHT = 6,411lbs.; NOTE, REBAR WEIGHT DOES NOT INCLUDE STAIR PIER.

ANCHOR BOLT CLUSTER: USE (6) 7/8" #
ASTM-F1554-S2, S5 Gr. 105 ANCHOR BOLTS
x 5'-0" LONG, w/A 1/2" THICK BEARING PLATE
INSTALLED AT THE BASE OF THE CLUSTER;
TYPICAL EACH LEG

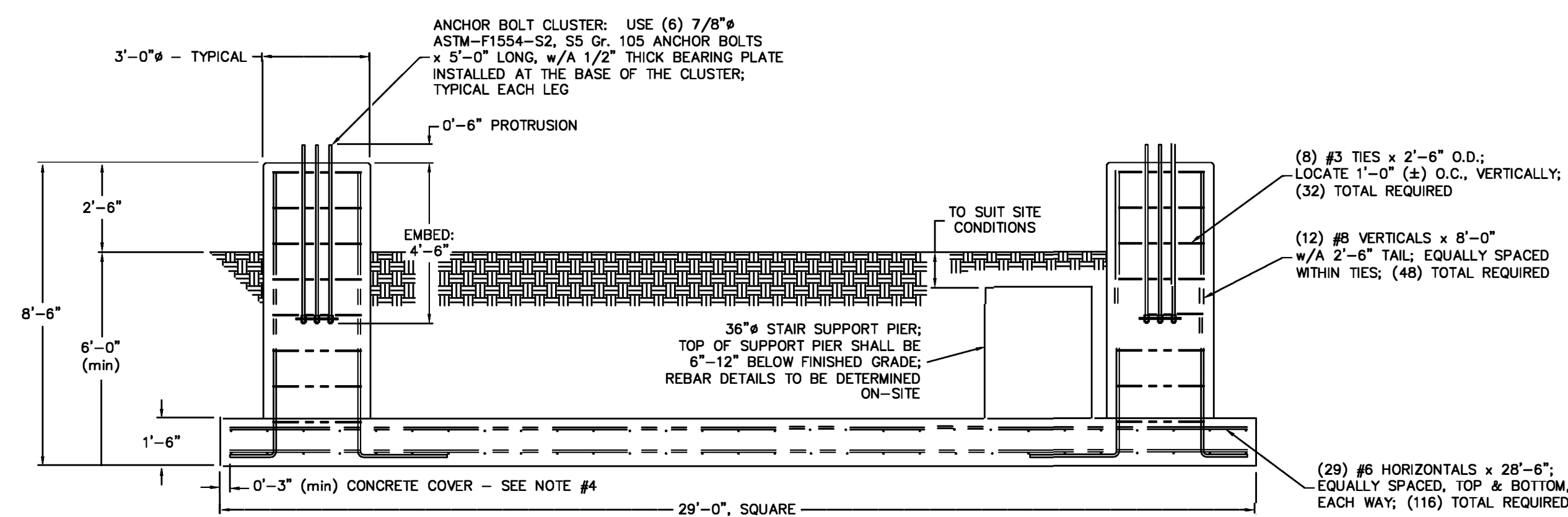
33'-4 15/16" O.C. ±1/8"
TYPICAL CROSS-CORNERS



PLAN VIEW



TYPICAL LEG PIER CROSS-SECTION
SCALE = 1:8



TYPICAL FACE

SWAGER COMMUNICATIONS INC. P.O. BOX 656; 501 E. SWAGER DR.; FREMONT, IN 46737			
THIS DRAWING IS THE PROPERTY OF SWAGER COMMUNICATIONS, INC. IT IS NOT TO BE REPRODUCED, COPIED, OR TRACED IN WHOLE, OR IN PART WITHOUT OUR WRITTEN CONSENT			
SCALE	DWN	J. NEFF	
1:40	APP'D	D. SWAGER	
TITLE	MODEL: 77ft RADAR TOWER		
TOWER FOUNDATION DETAILS			
DATE	DRAWING NUMBER		
02/21/18	3876-17-A02		